

30 Times Arcade Alley

Brevard, North Carolina 28712

Property Highlights

- High foot traffic walkable downtown location.
- Direct visibility from Main Street.
- Opportunity to purchase business.

Property Overview

Retail purchase opportunity in the center of downtown Brevard! This property, commonly known as downtown chocolates, offers an incredible opportunity for owner users looking to be centrally located in Brevard's highly active downtown. Located within direct view of main street, this 1,600 SQ FT retail building offers tremendous opportunity to capture foot traffic and take advantage of high visibility. Existing Chocolate business is also for sale if desired, or real estate can be purchased independently.

Offering Summary

Sale Price:	\$396,800
Available SF:	1,600
Lot Size:	0.04 Acres
Zoning:	C1

Demographics 0.5 Miles 1 Mile 1.5 Miles

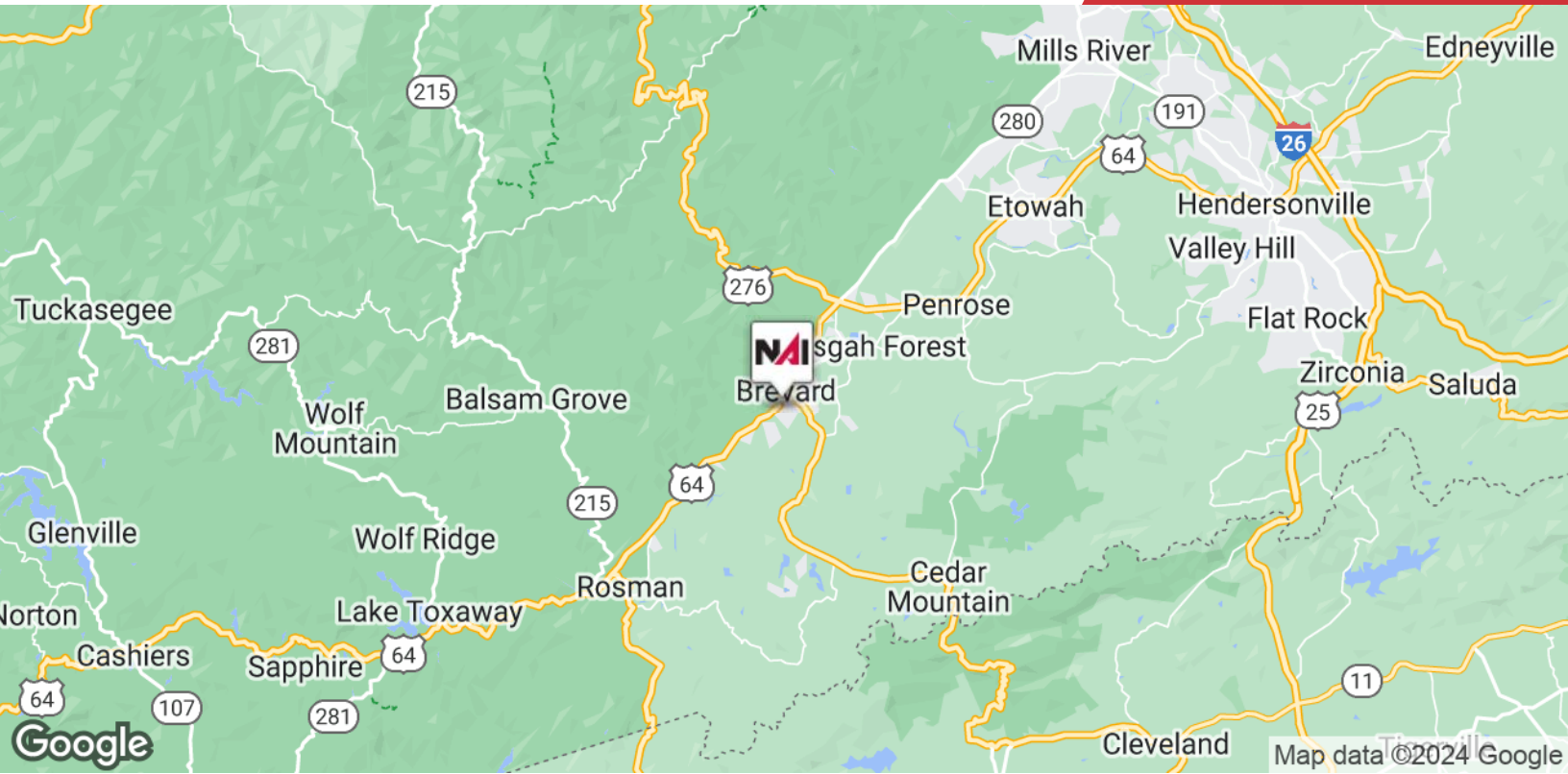
	0.5 Miles	1 Mile	1.5 Miles
Total Households	669	1,835	2,796
Total Population	1,180	3,239	5,126
Average HH Income	\$42,791	\$47,073	\$51,406

For More Information

Chris Mansfield

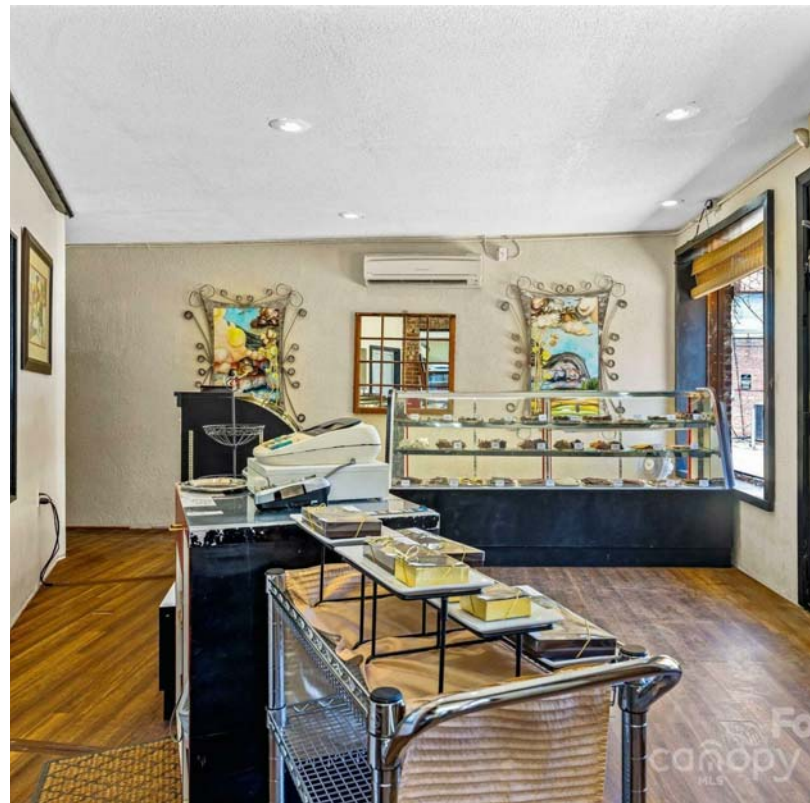
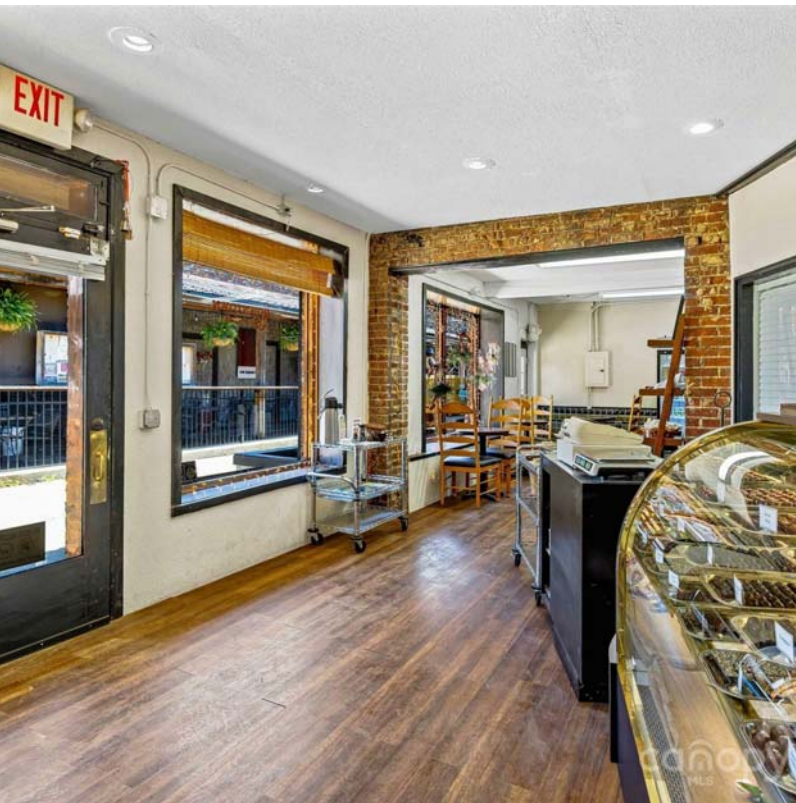
O: 845 699 3340

cmansfield@naibevery-hanks.com | NC #340236



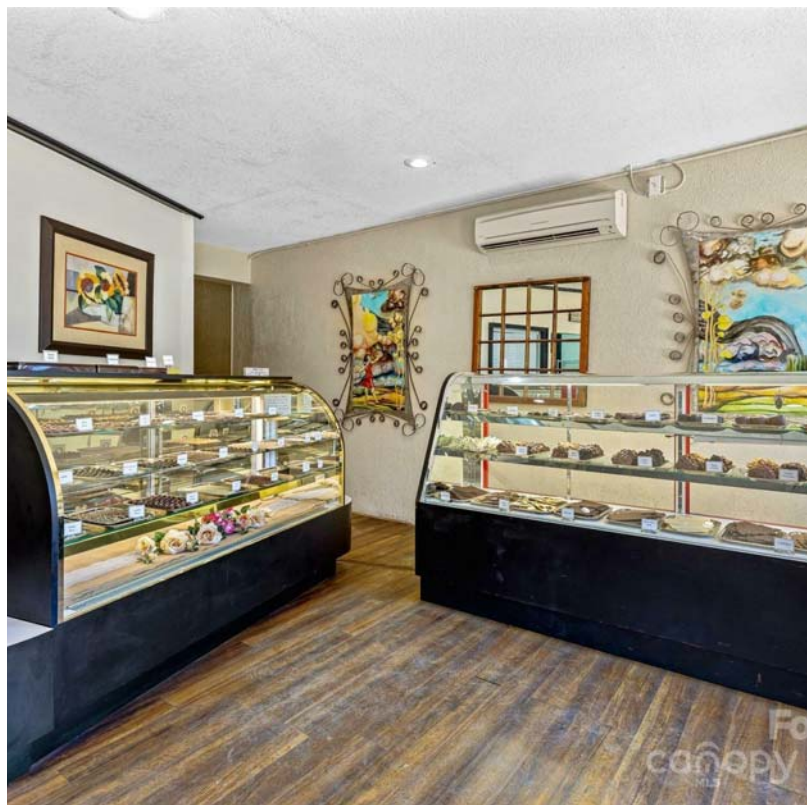
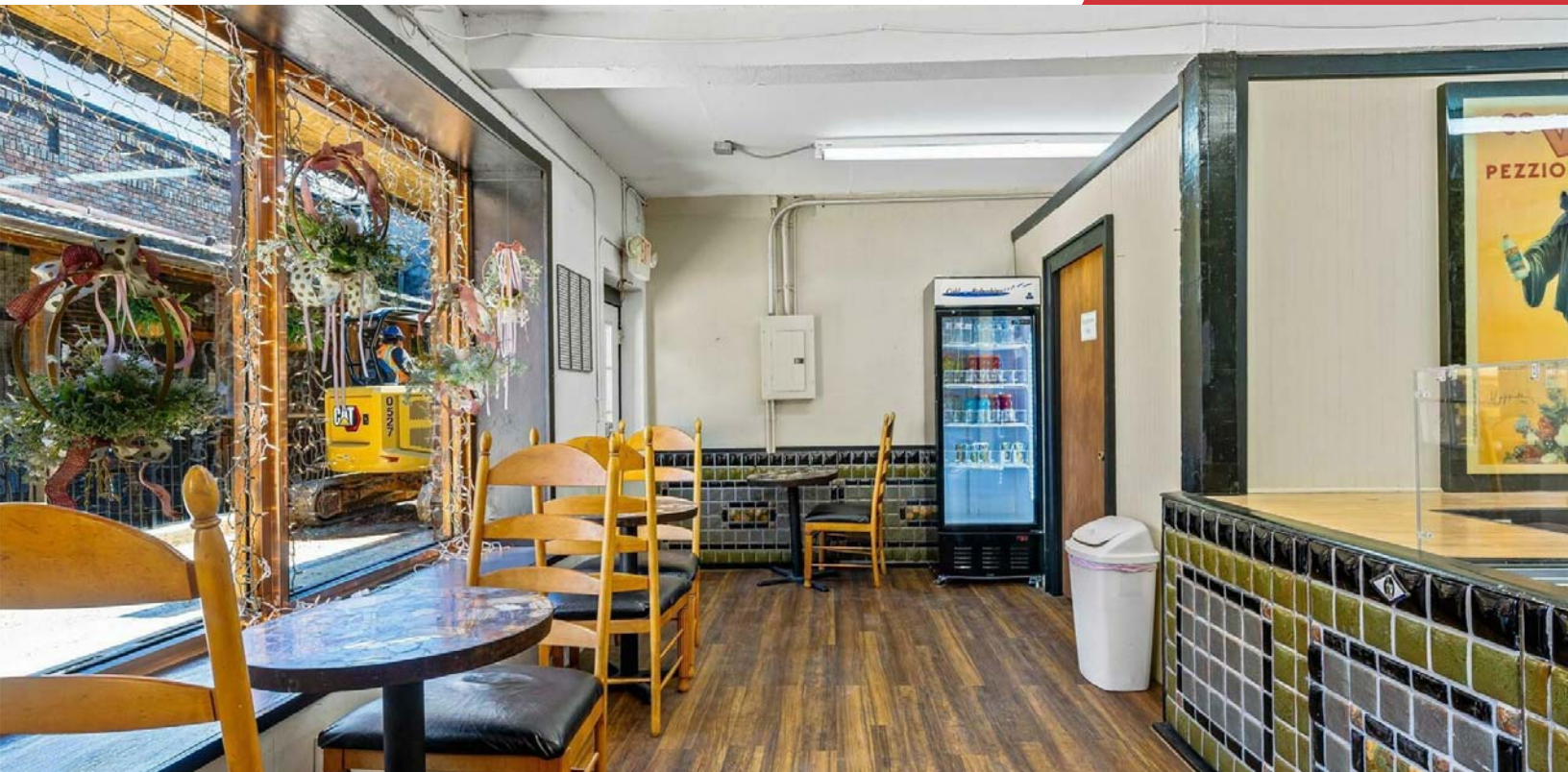
We obtained the information above from sources we believe to be reliable. However, we have not verified its accuracy and make no guarantee, warranty or representation about it. It is submitted subject to the possibility of errors, omissions, change of price, rental or other conditions, prior sale, lease or financing, or withdrawal without notice. We include projections, opinions, assumptions or estimates for example only, and they may not represent current or future performance of the property. You and your tax and legal advisors should conduct your own investigation of the property and transaction.

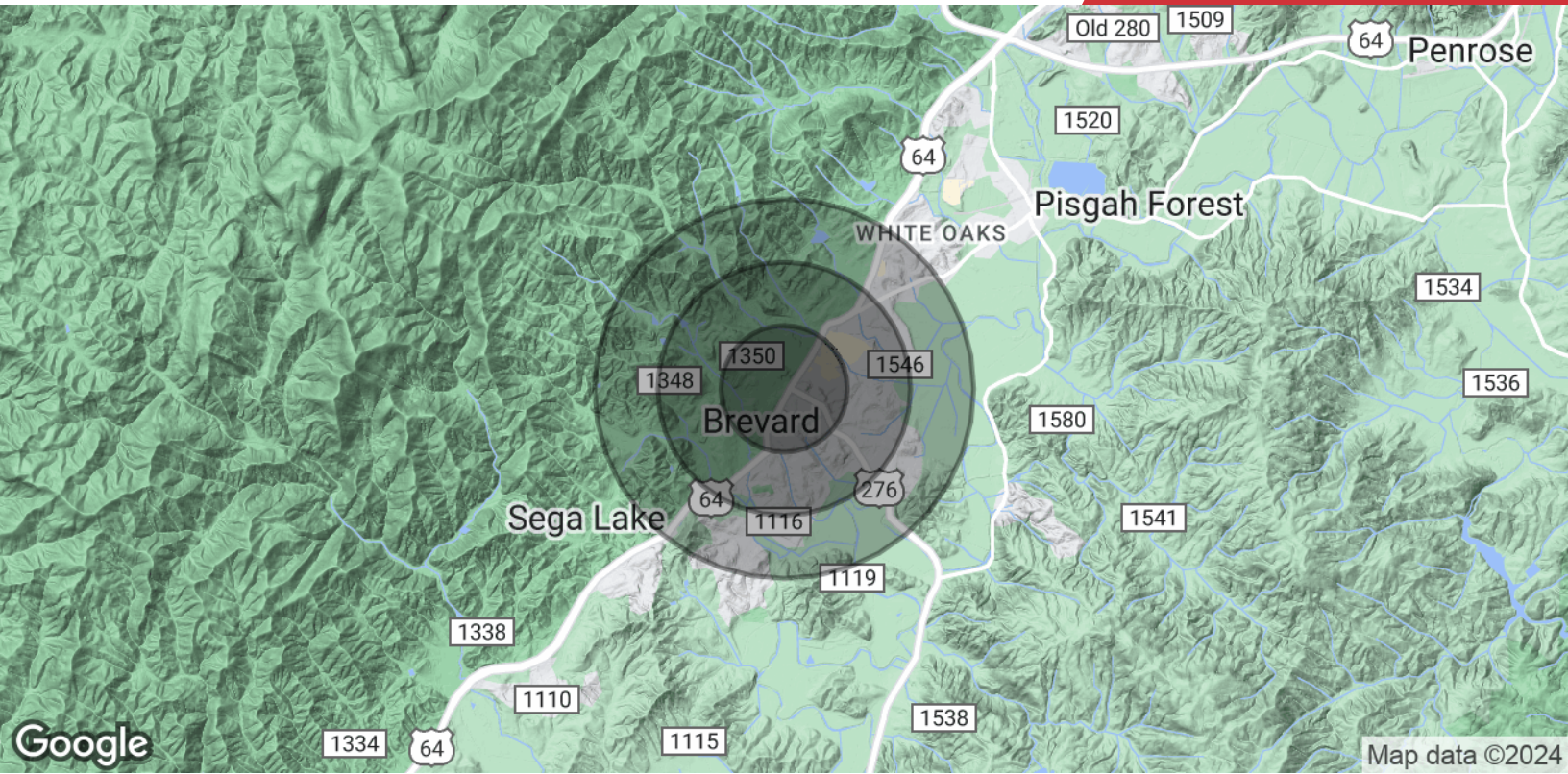
410 Executive Park
Asheville, NC 28801
828 210 3940 tel
naibeverly-hanks.com



We obtained the information above from sources we believe to be reliable. However, we have not verified its accuracy and make no guarantee, warranty or representation about it. It is submitted subject to the possibility of errors, omissions, change of price, rental or other conditions, prior sale, lease or financing, or withdrawal without notice. We include projections, opinions, assumptions or estimates for example only, and they may not represent current or future performance of the property. You and your tax and legal advisors should conduct your own investigation of the property and transaction.

410 Executive Park
Asheville, NC 28801
828 210 3940 tel
naibeveryly-hanks.com





Population

	0.5 Miles	1 Mile	1.5 Miles
Total Population	1,180	3,239	5,126
Average Age	44.5	46.4	48.0
Average Age (Male)	40.0	46.4	48.5
Average Age (Female)	47.1	47.4	48.2

Households & Income

	0.5 Miles	1 Mile	1.5 Miles
Total Households	669	1,835	2,796
# of Persons per HH	1.8	1.8	1.8
Average HH Income	\$42,791	\$47,073	\$51,406
Average House Value	\$186,948	\$214,955	\$230,189

2020 American Community Survey (ACS)



Chris Mansfield

Commercial Broker

cmansfield@naibeverly-hanks.com

Direct: 845.699.3340

NC #340236

Professional Background

Christopher Mansfield brings to the table his award-winning background in architectural design and development to every commercial brokerage transaction he participates in. He completed his Bachelor's degree in Architectural Technology at Alfred State College, and later pursued and received an accredited Masters of Architecture degree at The University of Massachusetts, Amherst. During his time in Massachusetts, he was awarded a joint AIA / WMAIA scholarship for his award-winning infill development design. Upon graduation, he was also awarded the AIA Henry Adams Certificate of Merit for excellence in the study of architecture.

Prior to embarking on his commercial brokerage career, Christopher actively practiced as a licensed architect in a real estate development setting, with a heavy focus on commercial projects. This experience in architect-driven development allowed him to master high level real estate skills in detailed proforma development, site analysis, zoning analysis, property acquisitions, entitlements, architectural site plan development, bidding and negotiating, and state of the art project presentation and marketing. During his time in practice, Christopher served his community as architectural review consultant for the City of Poughkeepsie Planning Board. In 2019 he was a recipient of the prestigious Dutchess County Chamber of Commerce - 40 under 40 Movers and Shakers award.

In more recent years, Christopher has actively applied his invaluable architecture and development background in daily practice as a distinguished, professionally trained, commercial broker. He has worked with numerous clients, in a variety of capacities, on a wide array of asset types including land development, industrial, multi family, retail, and office use. He has also invested in and holds commercial real estate personally, serving as managing member of his mixed use commercial portfolio. Christopher believes personal commercial real estate ownership gives him the distinguished ability to deeply understand the unique challenges both property owners and tenants face both during, and long after, a transaction is completed. His experience both personally and professionally allows him to intelligently navigate the challenges and drive every transaction towards long term success.

In his spare time Christopher currently exercises his design and development skills doing social change development projects internationally. He currently sits on the Board of Directors of the Honduras Hope Mission non-profit, and led the site selection, design, and development of the mission's new community center, which completed construction in 2022. The community centers design has been showcased by the AIA It takes Community, 2017, Greenbuild 2017, and the United Nations Habitat III. When he's not working, Christopher enjoys spending time with his wife, playing frisbee with his Belgian Sheepdog Pancho, and riding his motorcycle through the mountains.

NAI Beverly-Hanks
410 Executive Park
Asheville, NC 28801
828.210.3940